

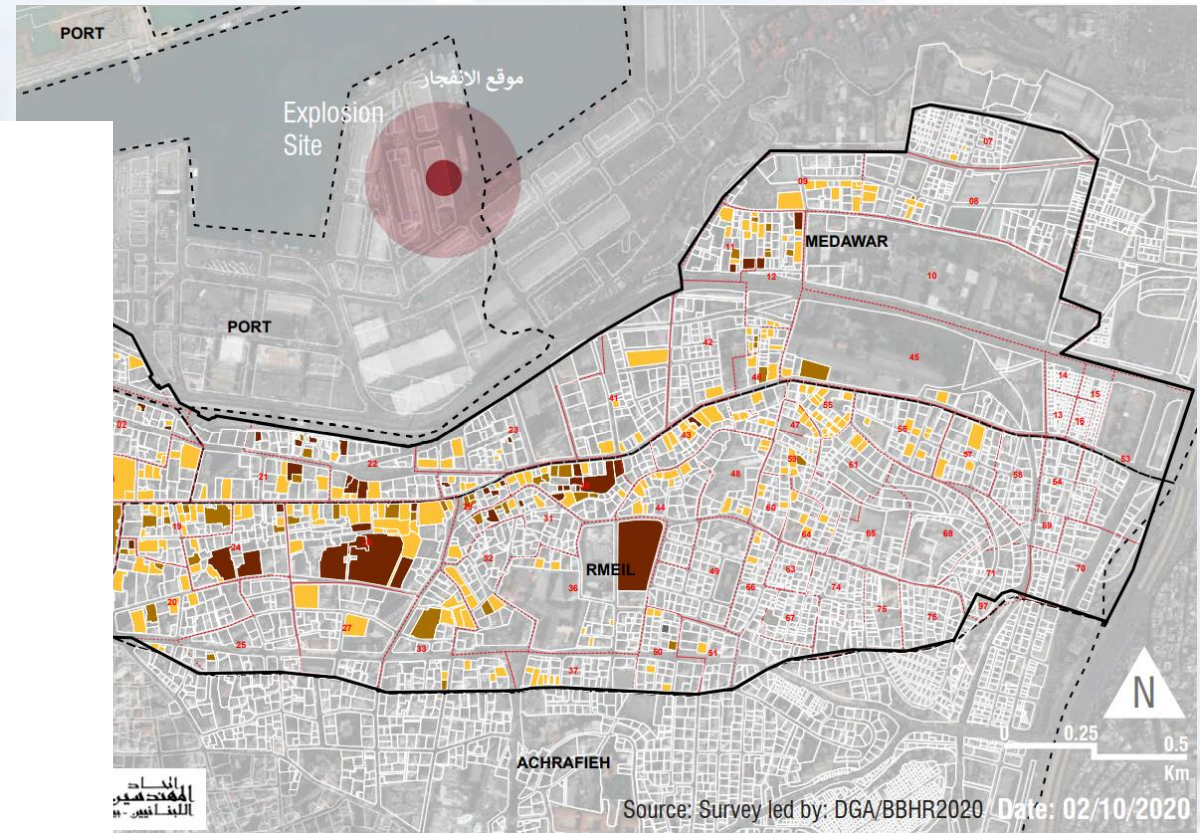
LEBANESE REPUBLIC
Presidency of the Council of Ministers



Beirut Port Disaster Situation Report # 8

2 November 2020

The weekly situation report addresses the public at large and provides highlights of the different aspects of Response to Beirut Port Disaster being done by different national and international stakeholders in terms of mobilization and coordination of resources to meet affected peoples' needs.



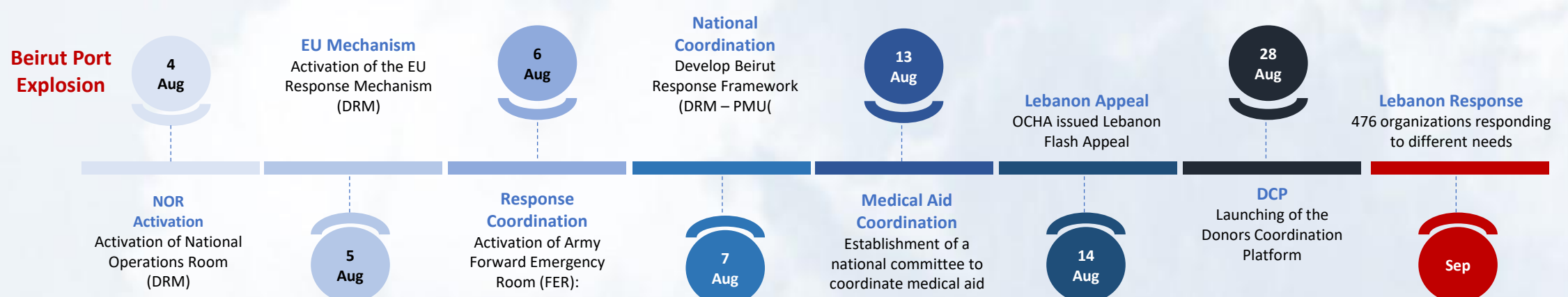
The Lebanese Government Response Plan aims at saving lives; providing immediate basic assistance to all affected people; restoring life conditions in the affected areas and implementing a national recovery plan including health, economy, education, social and environment sectors.

HIGHLIGHTS

- Since the beginning of response, 37,044 houses were assessed, 2850 houses were restored, and 6,376 houses are still under restoration in the affected areas with the assistance of 57 organizations (FER Sitrep 30/10/2020).
- 23 organizations are collaborating with the Army Forward Emergency Room (FER) to secure food for families in need in the affected area. To date, a total of 343,168 food parcels were distributed (FER Sitrep 30/10/2020).
- Through the damage assessment conducted by the Federation of Lebanese Engineers, the Beirut Municipality, the Front Emergency Room (FER), the High Relief Commission, and the Ministry of Public Works and the General Directorate of Antiquities, a total of 3,040 properties out of which 2500 buildings were assessed. The assessment indicates that there are 300 buildings threatened with total or partial collapse, 250 are subject to separation in some parts, and 550 have cracks in some of their elements, and 100 buildings of heritage are at risk of collapse (OEA, BEIRUT PORT EXPLOSION OF AUG 04, 2020: BUILDINGS FINAL STRUCTURAL ASSESSMENT REPORT).
- Since the beginning of the response, 188 households were supported with cash-for-rent. A total of 14,500 households are being targeted by the sector. - 484 affected households benefitted from minor repairs (level 1); the majority of those reached live in Achrafieh, Bachoura, Bourj Hammoud, Rmeil and Zkak el-Blatt. Since the beginning of the response, out of 22,000 apartments targeted, minor repairs to 1,015 apartments were conducted (OCHA, Sitrep #13, 15/10/2020).
- To date, 91 donors have made around 319 contributions for around 137 MUSD, including 259 in-kind donations and 60 cash donations within health, education, food security, protection and shelters sectors (Donors Coordination Platform: <https://dcp.pcm.gov.lb> – 1/11/2020).
- The UN-coordinated response to the Beirut Port explosions, through the Flash Appeal issued on 14 August, is seeking US\$354.9 million to address immediate lifesaving and time-critical early recovery needs for three months. Funding towards 119 projects, targeting 300,000 people in need, is being secured mainly in the Food Safety, Health, Shelter, and protections sectors with a total of \$101.6 million as of 15 October. In addition, at least \$19M has been contributed outside of the Flash Appeal (OCHA, Sitrep #13, 15/10/2020).
- Twelve micro, small and medium-sized enterprises (MSMEs) received direct support with either rehabilitation or financial assistance during the reporting period. Since the beginning of the response, 207 MSMEs were supported. An additional 124 establishments will be reached over the next weeks (OCHA, Sitrep #13, 15/10/2020).
- As of 8 October, 7,880 buildings were assessed since the beginning of the response, showing over 1,800 buildings needing at least one type of WASH intervention and/or support, and nearly 400 buildings having connection issues to the main urban network. In addition, 5,980 water tanks and 538 pumps were found to be damaged (OCHA, Sitrep #13, 15/10/2020).
- Since the beginning of the response, water supply connection was re-established for 19,922 people (3,946 households), living in 957 buildings. A total of 3,372 tanks and 235 pumps were installed since the beginning of the response. Also, out of 80 leakages to the water pipeline identified, 25 were repaired (OCHA, Sitrep #13, 15/10/2020).
- WFP started cash distributions to 4,280 explosion-affected vulnerable population who will receive a monthly transfer of 250 USD or LBP equivalent for a period of 6 months, and preparation for the verification exercise of National Poverty Targeting Programme (NPTP) for scale up of targeted households from the current 15,000 households to 50,000 households is on-going (WFP, Country in Brief, September 2020).
- WFP is working with other UN and development partners on the development of the Recovery, Resilience and Reconstruction Framework (3RF) that will articulate immediate, short- and medium-term priorities to respond to the Beirut emergency with critical reforms for Lebanon (WFP, Country in Brief, September 2020).



KEY RESPONSE MILESTONES



SITUATION OVERVIEW

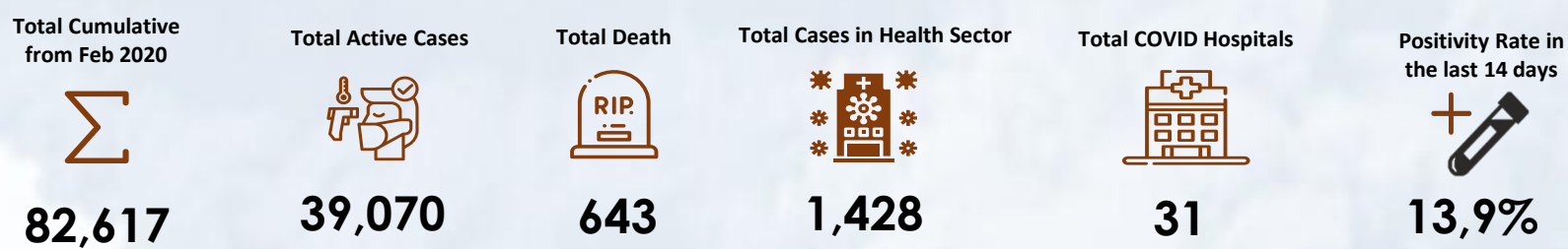
After three months of the devastating disaster that hit Lebanon on August 4, 2020 where a large amount of ammonium nitrate stored at Beirut Port exploded leaving more than 205 victims, more than 6,500 injuries and a massive damage in the Port area and its surroundings estimated between US\$3.8 and US\$4.6 billion, in addition to US\$2.9 to US\$3.5 billion in economic losses according to the World Bank Beirut Rapid Damage Assessment, tens of countries are providing help to overcome this disaster, the UN has launched an appeal to mobilize the needed resources to respond to the identified humanitarian needs and hundreds of national and international organizations have joined efforts to support impacted communities in coordination with the Forward Emergency Room headed by the Army.

The updated reported needs from different response agencies include the ability to restore damaged houses before winter, protection, community outreach activities, food assistance, provision of mental health and psychosocial support services, while a big number of micro, small and medium enterprises are not able yet to restore its business and restart working, which increase the need for cash base assistance for thousands of families in the affected area. At the same time, the COVID-19 cases are still increasing with more than one thousand cases per day with an average of 13.9% positivity rate during the last fourteen days and the limited number of COVID ICU beds available at hospitals that already suffer from a shortage in PPEs and medical supplies and equipment.

Different countries, international organizations, as well as individuals continue providing cash and in-kind donations to help the medical system in Lebanon sustain its services (<http://dcp.pcm.gov.lb>). The Ministry of Public Health is implementing a plan to increase the number of COVID ICU beds in two months and is coordinating with the private hospitals to increase its capacity to receive and treat COVID patients. At the same time, the National Coordination Committee for COVID19 Preventive Measures and Procedures in cooperation with the Ministry of Public Health and the Ministry of Interior and Municipalities are monitoring on weekly basis the spread of COVID19 at villages level and issue the needed decisions of lockdown and control at areas with very high risk (<https://bit.ly/DRM-RiskLevelInMunicipalities>).

COVID-19 Latest Updates

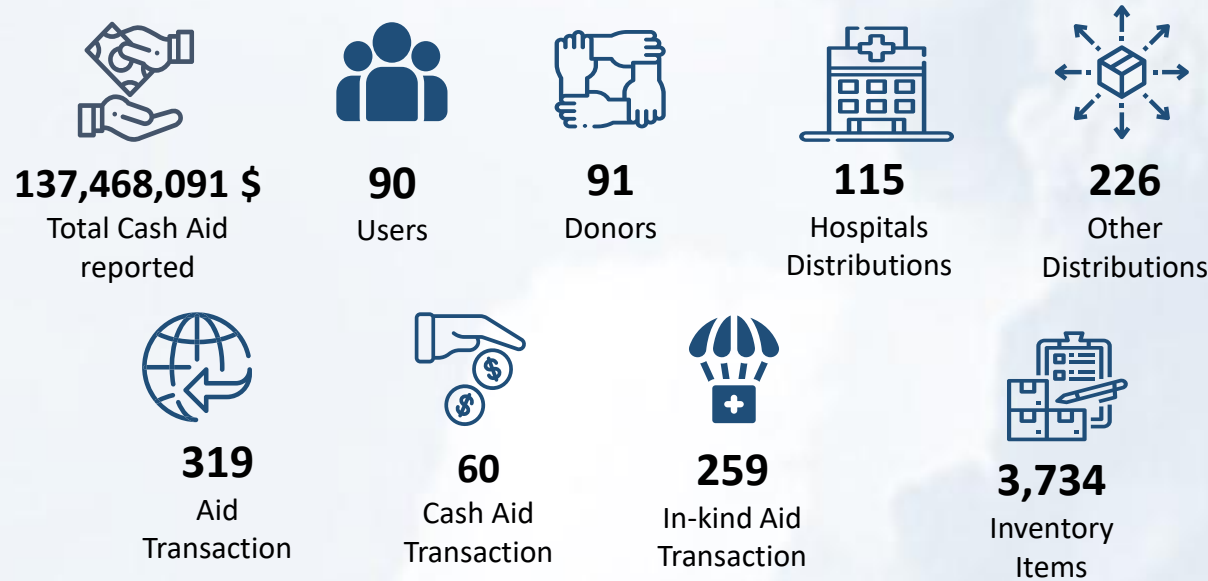
Daily updates on COVID-19 status can be found at the following links:
Daily COVID-19 Situation Report: <http://drm.pcm.gov.lb>.



INTERNATIONAL AID

Countries Direct Support

More information about the type and source of aid, needs and damage in the public sector can be found at the Donors' Coordination Platform <https://dcp.pcm.gov.lb>



Cash contributions per donor

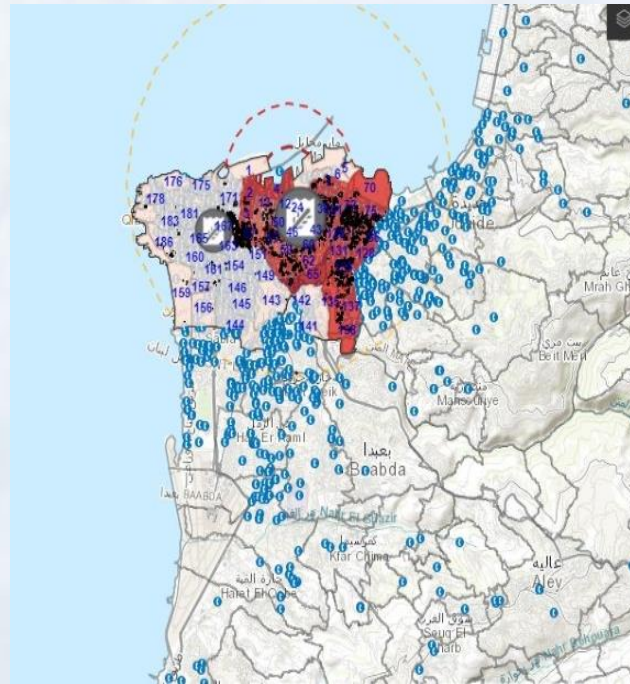


On October 13, 2020 Portugal has provided 3 tons of medical aid, and Malta has donated 45 tons of clothes through DAFA organization.

On October 15, 2020, the Lebanese Diaspora in Australia has donated medical supplies to Bcharri Hospital through the FER.

The Forward Emergency Room (FER) SitRep – 30/10/2020.

Summary of interventions in the affected areas:	Total Cumulative	New in reporting period
No. of houses assessed	37,044	0
No. of restored houses	2,850	150
No. of stabilized houses	19	0
No. of houses evacuated	72	0
No. of houses under restoration	6,376	1,976
No. of NGOs engaged	57	1



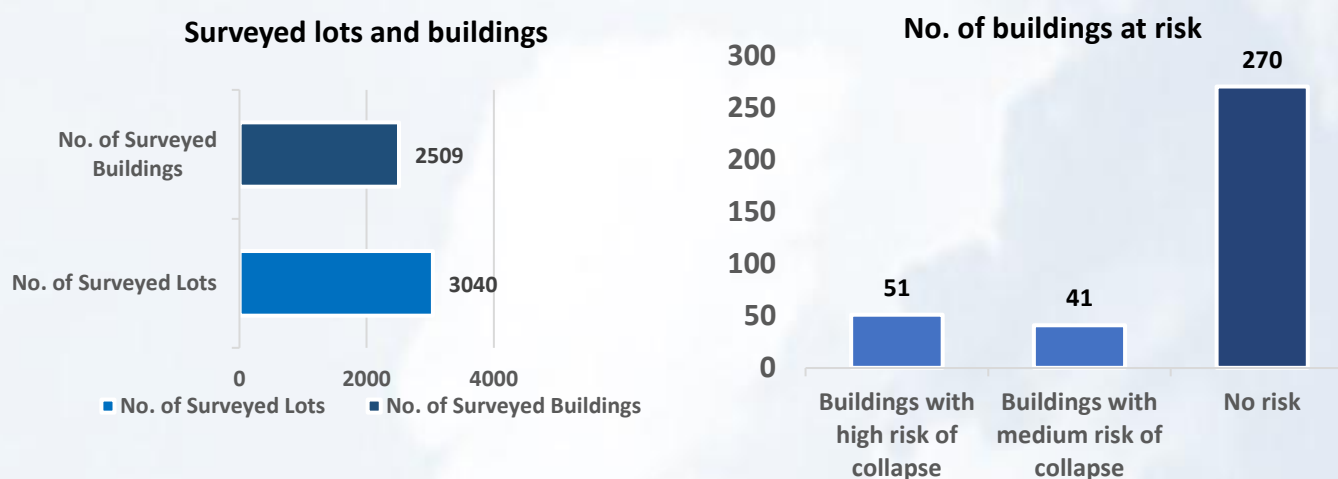
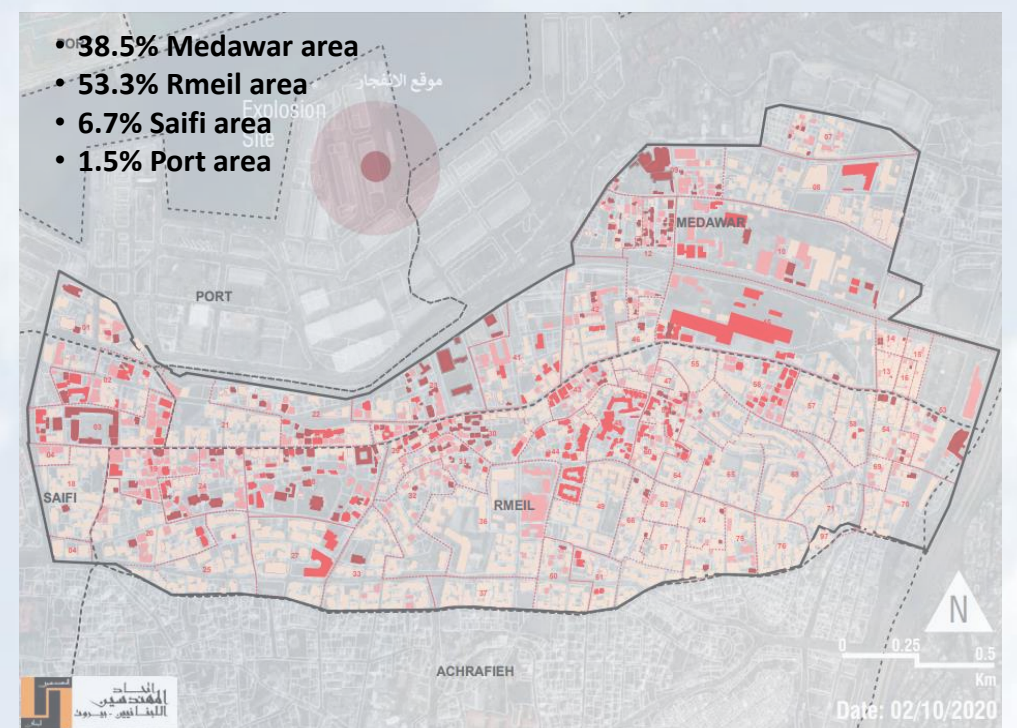
57 NGOs active in the Shelter Sector: AA Stouh Beirut, ACTED, Ahla Fawda, AVSI, Beib w Chebbak, Beit El Baraka, Dorcas, DPNA, Green Lebanon association, House of Christmas, INTERSOS, IOCC, Leb relief, Lebanese Red Cross, LOT, Medair, Nusaned, Offre Joie, Orion and partners (Be Beirut Organization), Ousaned, Racht Kheir, Rotary club Beirut cedars, Sar Badda, Save the children, Solidarites International, Son of Man, Tanmiyat Beirut, UNDP, World Vision, Secour Islamic France, Ajjalouna, Aylet Mar Charbel, Bassma, Caritas, CHREEK, CISP, Concern WW, Front Line Engineers, GroundZero, Heart For Lebanon, Renee Mouad Foundation, Solidarity, WPF, World Vision, AAmal Tanmawi Bala Houdoud Nabeh, FDCD , Live love Beirut , Basmeh zeitouneh , Arc en ciel, Rise build Beirut, Utopia, NRC, Green party of Lebanon, LOYAC, ANERA, NEO leaders, ECAC.

- Between 8 and 19 October 641 households have received the USD 600 one-time cash grant, reaching 2,179 individuals by UNHCR; the Programme targets a total of 11,500 vulnerable households with lightly or moderately damaged homes to allow them to undertake minor repairs. UNHCR is focusing its response to the Beirut port explosions in the shelter and protection sectors. The plan is to reach over 100,000 affected persons through direct interventions. (UNHCR Flash Update on Lebanon: Beirut Port Explosions, Sitrep 19/10/2020).
- New relationships have been established between UNHCR and the Government’s Directorate General of Antiquities as well as more than 20 experts part of the ICOMOS (International Council on Monuments) network, specialized heritage architects and craftspeople to provide technical advice, monitoring and construction management, working with specialized contractors and artisans (UNHCR Flash Update on Lebanon: Beirut Port Explosions, Sitrep 19/10/2020).
- Since the beginning of the response, 188 households were supported with cash-for-rent. A total of 14,500 households are being targeted by the sector; 484 affected households benefitted from minor repairs in Achrafieh, Bachoura, Bourj Hammoud, Rmeil and Zkak el-Blatt (level 1); out of 22,000 apartments targeted, minor repairs to 1,015 apartments were conducted; 31 affected households benefitted from rehabilitation of their apartments (level 2) in Achrafieh, Medawar and Rmeil; and out of 6,500 apartments targeted, rehabilitations to 243 apartments were conducted (OCHA, Sitrep #13, 15/10/2020).

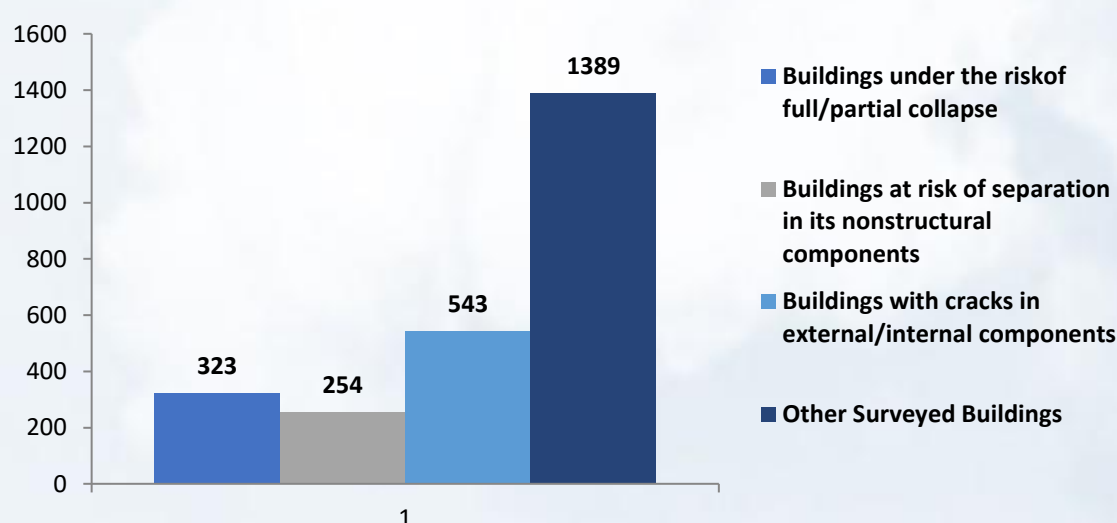
BEIRUT PORT EXPLOSION OF AUG 04, 2020: BUILDINGS FINAL STRUCTURAL ASSESSMENT REPORT

Federation of Lebanese Engineers, Beirut Municipality, the Front Emergency Room (FER), the High Relief Commission, and the Ministry of Public Works and the General Directorate of Antiquities (October 2020).

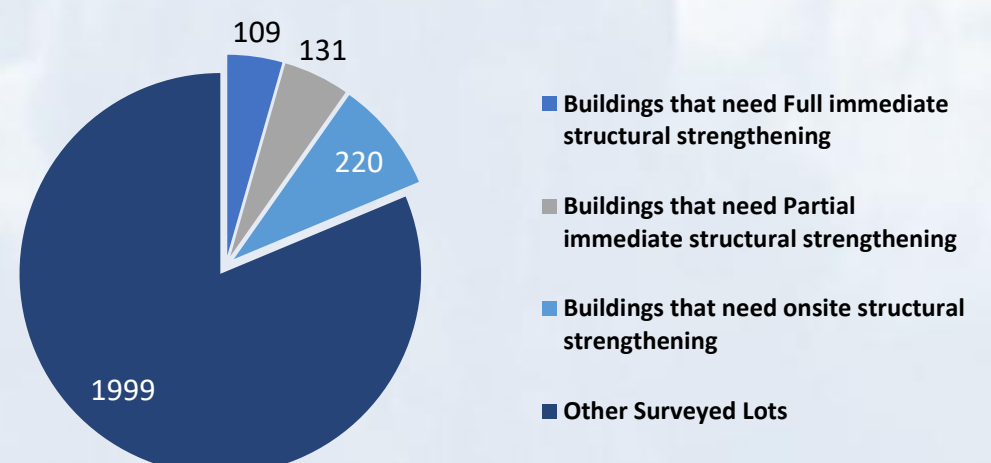
As a result of the survey on 2509 buildings, it was found that there are more than 300 buildings threatened with total or partial collapse, about 250 are subject to separation in some parts, and 550 have cracks in some of their elements needing restoration/treatment. It was also found that the most affected areas by the explosion include about 360 buildings of heritage value dating from the nineteenth century until the thirties of the last century. More than 100 of these buildings are at risk of collapse.



Major Assessment Results



General Recommendations



HEALTH

- The National Coordination Committee at the Prime Ministers' Office with the Ministry of Public Health, the Army Forward Emergency Room and the Syndicate of Private hospitals continue to assess and monitor the medical sector needs in terms of medicines, supplies and equipment, as follow-up with international donors is still going to mobilize additional in-kind and cash resources to support the health system.
- Through the UN coordinated response, different national and international organizations have been providing health support to affected communities. Among the organizations Amel Association, HelpAge International, Imam Sadr Foundation (ISF), International Medical Corps, Makassed, SIDC and UNFPA, Caritas, International Orthodox Christian Charities (IOCC) and Makhzoumi Foundation, International Association for Human Values, ISF, Jesuite Refugee Service (JSR), Médecins du Monde (Mdm), Relief International and Restart Center including awareness sessions, GBV consultations, home-based medical consultations, injury care, mental health services and provision of medicines (OCHA, Sitrep #13, 15/10/2020).
- To date, the International Medical Corps has distributed personal protective equipment (PPE)—including masks, gloves, and gowns— to 27 healthcare facilities, and medical supplies to 23 facilities including KN95 masks, nitrile gloves, alcohol swabs, bandages, surgical masks, surgical gowns, gauze and sanitizers (International medical corps, situation report #8, 22 October 2020).



FOOD SECURITY



Food Boxes
1,765 (new)



Hot Meals
26,227 (new)



Food Parcels
500 (new)

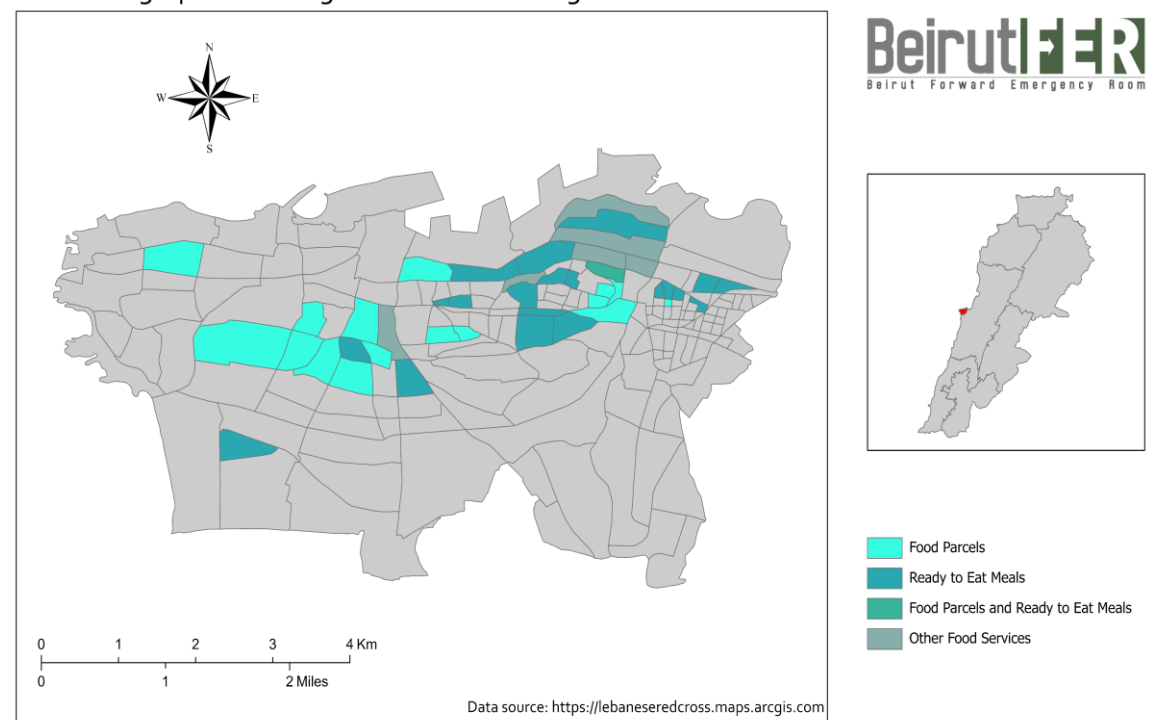
Up to date **343,168 (28,492 new)** food items were provided to people in the affected area through the FER and its Food Security Partners (UN agencies, International Organizations, National Organizations, Private Sectors, Volunteers).

Through the UN Coordinated response since the beginning of the response:

- 209,053 hot/ready-to-eat meals were distributed.
- 82,841 people received in-kind food parcels, covering 72 per cent of the known needs to date.
- 27,471 beneficiaries received multi-purpose cash assistance.
- 2,214 beneficiaries received food vouchers.
- 207 micro, small and medium-size enterprises supported with rehabilitation and financial assistance.
- 75 beneficiaries supported with cash-for-work.
- 12,500 metric tons of wheat flour distributed, covering 80% of the affected stock by the blast.

(OCHA, Sitrep #13, 15/10/2020).

Geographic Coverage of NGOs Providing Food Services



23 NGOs are collaborating with Beirut FER and have access to the workforce platform: Ahbab al khayr al ejtima3iya, Ahla Fawda, Banin, Beit al 3ineye al llehiye , CHREEK, Jouzourouna, Little Push, Rachet Kheir, Son of Man, World Vision, Esteklal El Khayriyye, Jannat Bladi Foundation, Koun Ijabi, LRC, Rabitat Abnae Bayrou, Majmouat el mototawein el hamrae, Feed the need, Borrada el hay, LOT, MSD, Insieme, Nabad, Secour Islamic France, Aa Stouh Beirut.

PROTECTION

Since the beginning of response, through the UN coordinated mechanism:

- 11,231 people reached through protection, gender-based violence outreach and risk mitigation activities.
- 10,718 people benefiting from information and awareness sessions and individual consultations.
- 6,340 people engaged in community-based child protection activities.
- 3,966 people provided with specialized mental health psychological support.
- 416 people reached with specific needs or emergency cash.

(OCHA, Sitrep # 8, 15/10/2020).

SOLID WASTE MANAGEMENT

- Sorting of the construction and demolition waste has been initiated in the Karantina area by UNHABITAT in partnership with AUB Neighborhood Initiative, LRI and other partners within the scope of the Rubble to Mountain project.
- USAID-funded Diverting Waste by Encouraging Reuse and Recycling (DAWERR) project implemented by ECODIT LLC is conducting a detailed technical assessment related to glass recycling entitled "Rapid Comparative Analysis of Available options for Managing Broken Glass from the Beirut Explosion"
- For the time being, the Karantina site was expanded to accommodate the quantities of the construction and demolition wastes to be sorted until the full plan is finalized (FER, Sitrep 30/10/2020).

EDUCATION

- The Ministry of Education and Higher Education with UNESCO and different partners continue to follow-up the restoration of damaged schools and the mobilization of needed financial resources to cover the gap in funding which remains significant to restore the damaged private schools (49%) and universities (64.4%). (MEHE and UNESCO FACT SHEET on School Rehabilitation / Beirut Blast Impact Updates / October 8, 2020).
- Since the beginning of response different national and international organizations have been providing support to children in the affected areas in Medawar Quarantina, Nation Station Achrafieh, Karm el Zeitoun Achrafieh, Burj al Barajneh and Chiyah and engaged thousands of children from different age groups on recreational activities, psychological support activities, sports and arts activities (OCHA, Sitrep # 8, 15/10/2020).
- In Basta, Geitawi and Quarantina, Ana Aqraa NGO is organizing literacy support classes for learners and their parents, and many children are attending supplementary educational services at the Geitawi and Saniyah centers supported by the Norwegian Refugee Council. The HOOPS NGO continues to support Sport-4-Development activities for adolescents and youths (OCHA, Sitrep # 8, 15/10/2020).

For more information:

DRM: Tel: 01-983670 Fax: 01-983873 Email: info@drm.pcm.gov.lb Website: <http://drm.pcm.gov.lb>
Army FER : Tel: 01/990055 – 01/987002 – 01/987003 Fax: 01/987004 Email: ADVEMERGENCYROOM@GMAIL.COM